

Lower Mississippi River
Watershed Management Organization
**2023-2032 Watershed
Management Plan**

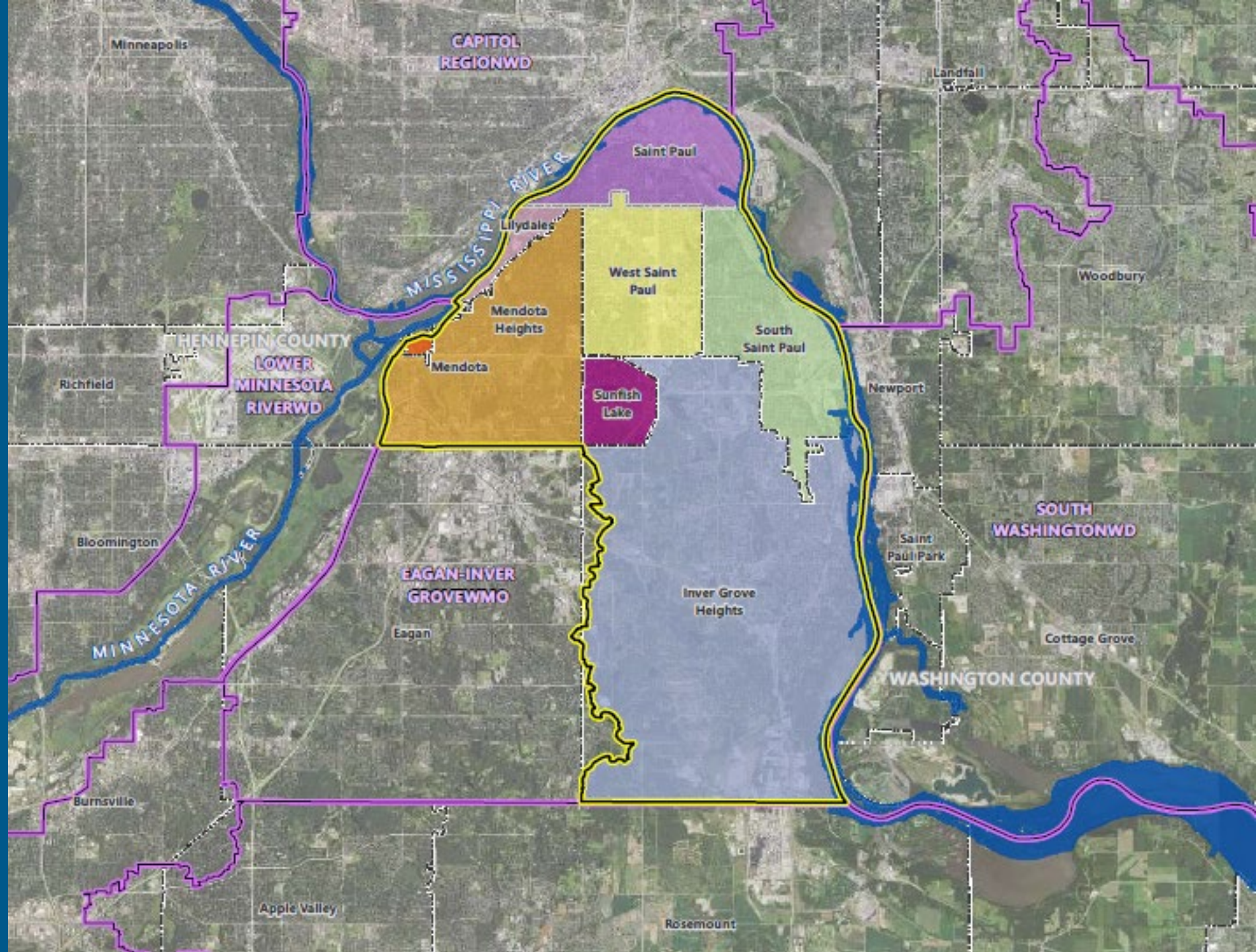
Public Hearing

November 9, 2022

Outline

- Overview of the LMRWMO
- Plan development process
 - Stakeholder engagement
 - Issue prioritization
 - Internal partner review
- Implementation and Next Steps

Overview of the Lower Mississippi River Watershed Management Organization



Overview of the Lower Mississippi River Watershed Management Organization

- 56 square miles
- Dakota and Ramsey Counties
- Seven member cities:



- Many lakes, ponds, wetlands
- Several streams
- Adjacent to Mississippi River

Overview of the LMRWMO

Activities since 2011

WQ Projects

- Alum treatments of Sunfish Lake and Lake Augusta
- Ravine stabilization in Cherokee Heights Park
- Stormwater treatment project upstream of Thompson Lake in collaboration with Dakota County

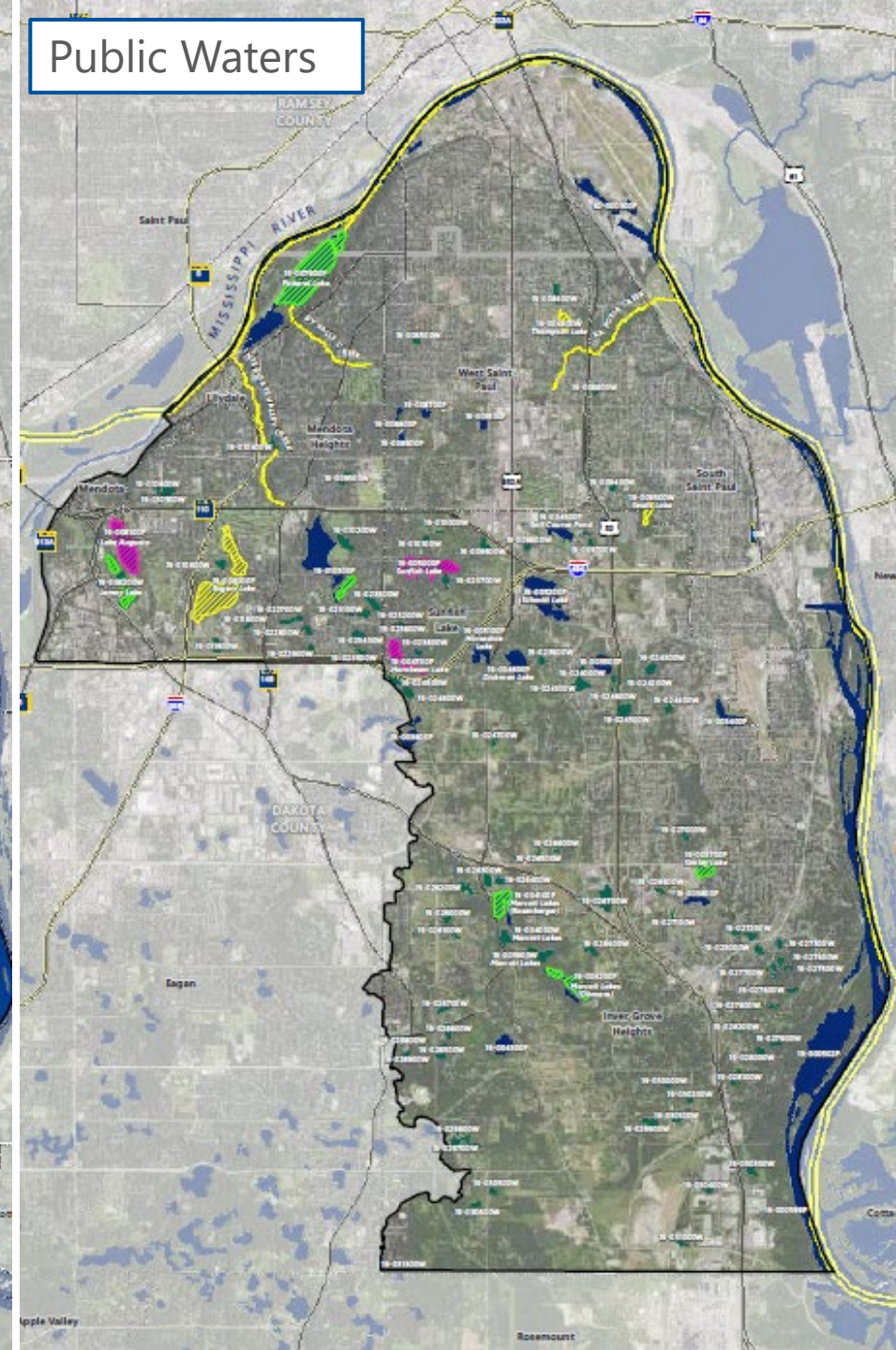
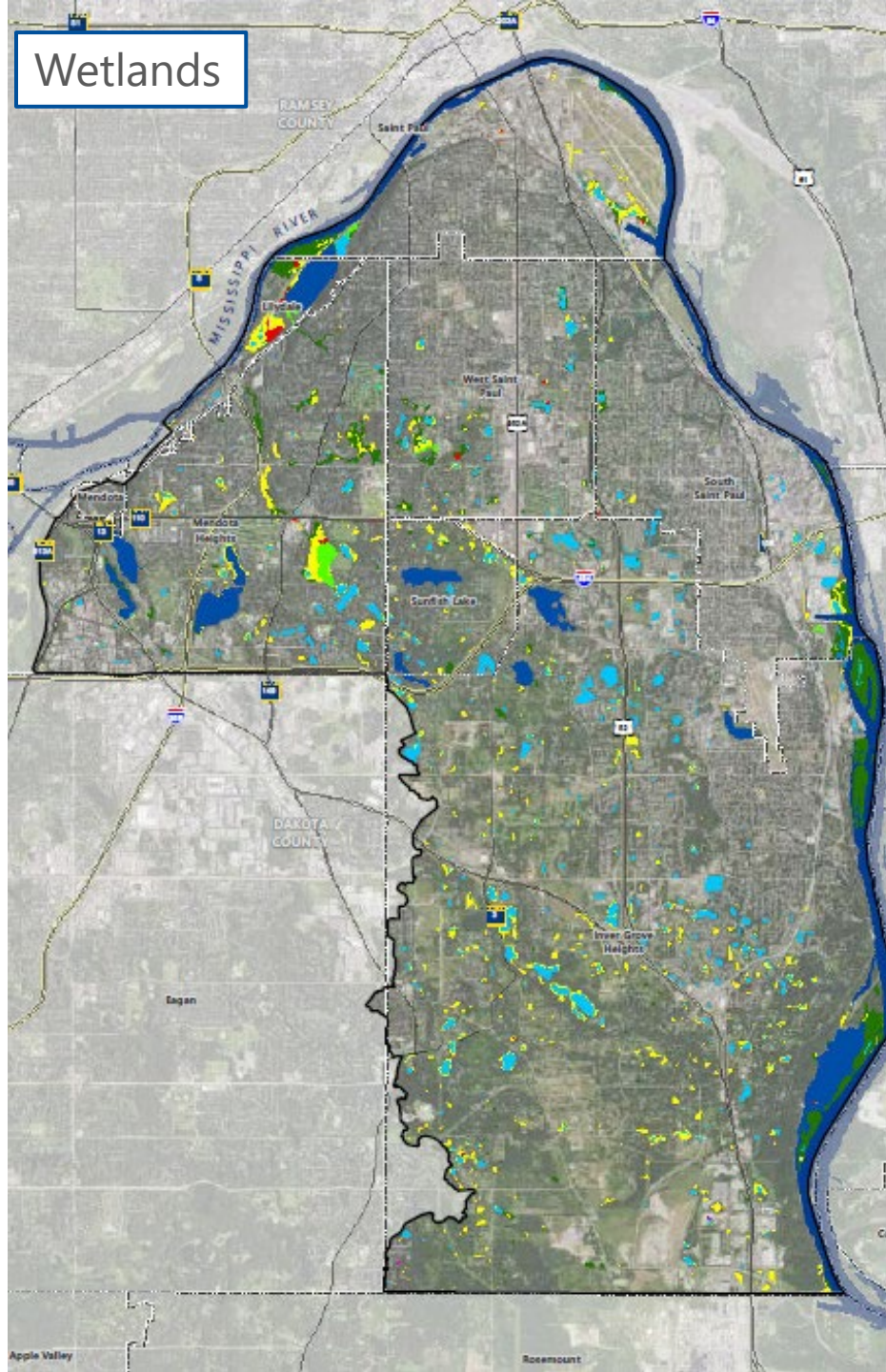
Monitoring & Studies

- Watershed Restoration and Protection Strategies (WRAPS) study
- Lake Augusta Diagnostic Feasibility Study
- Interstate Valley Creek Watershed Assessment
- Ongoing water quality monitoring through Met Council CAMP

Education & Outreach

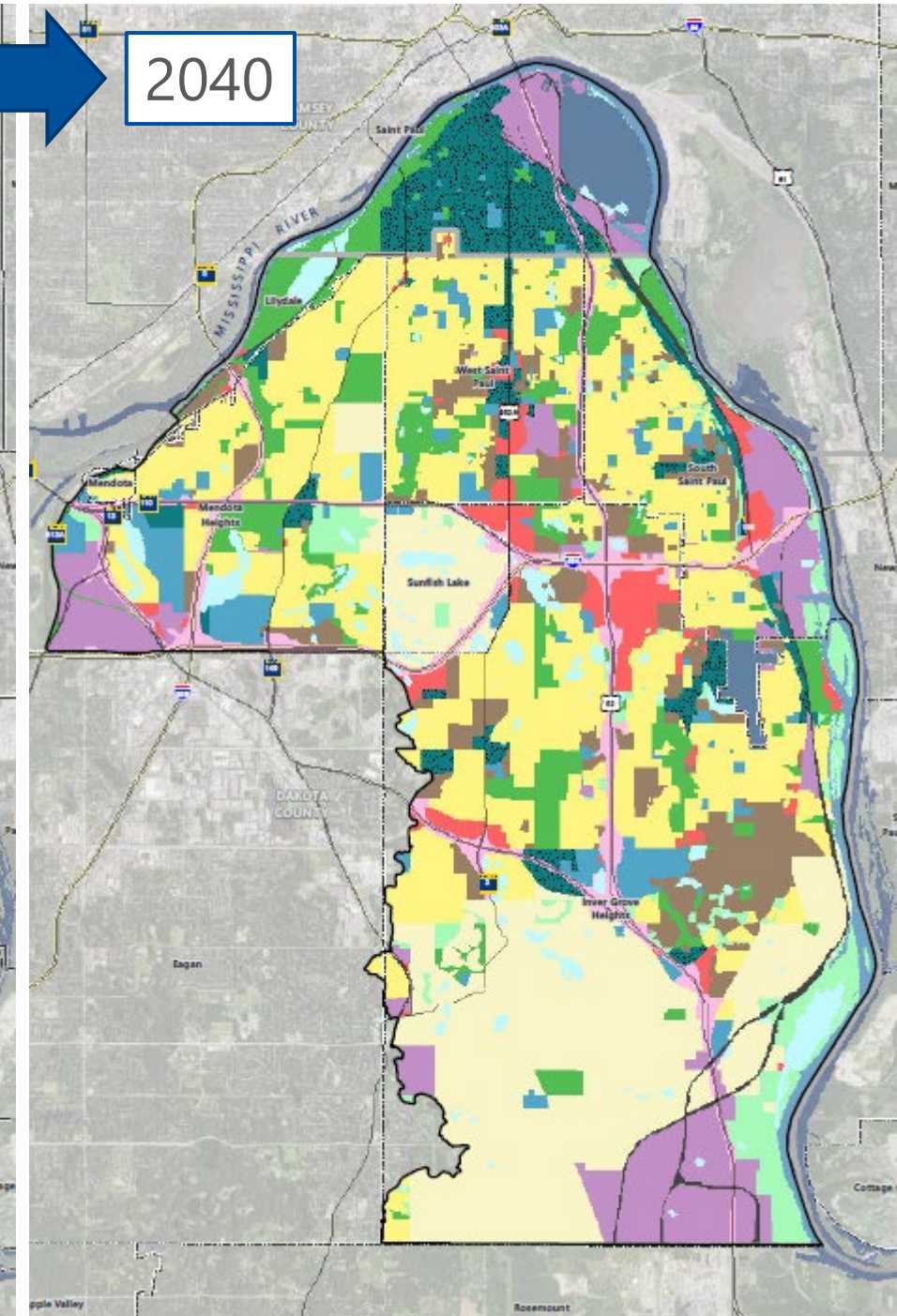
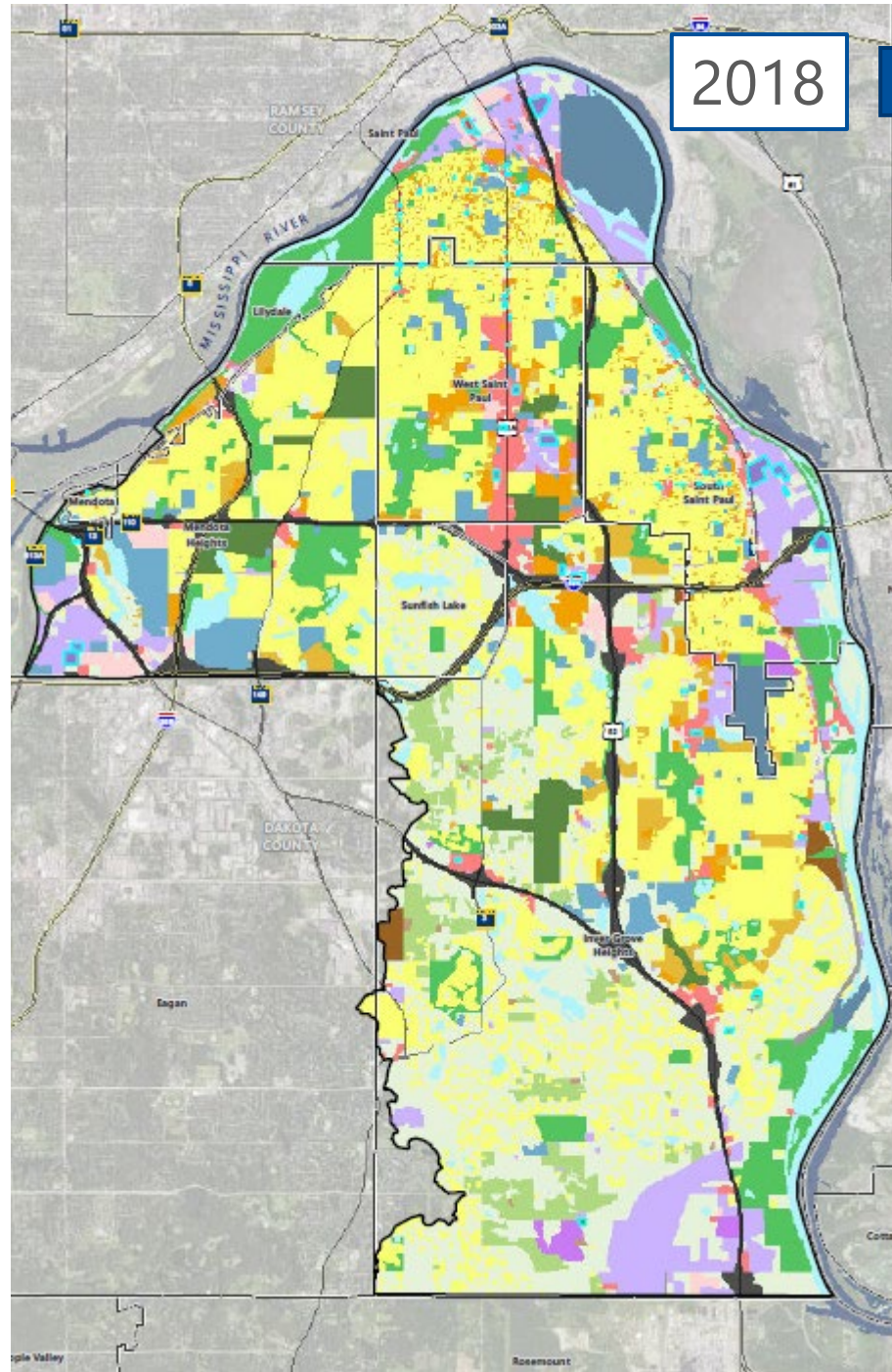
- Publishing the LMRWMO annual report
- Major website update in 2021
- Funding educational workshops and runoff capture projects
- Funding small-scale BMPs to improve water quality
- Funding multi-lingual salt application education materials

Overview of the LMRWMO Surface Waters



Overview of the LMRWMO

Land Use and Development



Overview of the LMRWMO

- Seven member Board of Managers
 - 1 Manager from each city (and alternate)
- No full time staff
 - Administrative services by Dakota SWCD
 - Consultants/SWCD support technical tasks
- Not a permitting authority
- Highly collaborate with member cities

Plan Development Process

Stakeholder Engagement

Summer 2020 – Summer 2021



Draft Plan Development

Summer 2022-Spring 2022

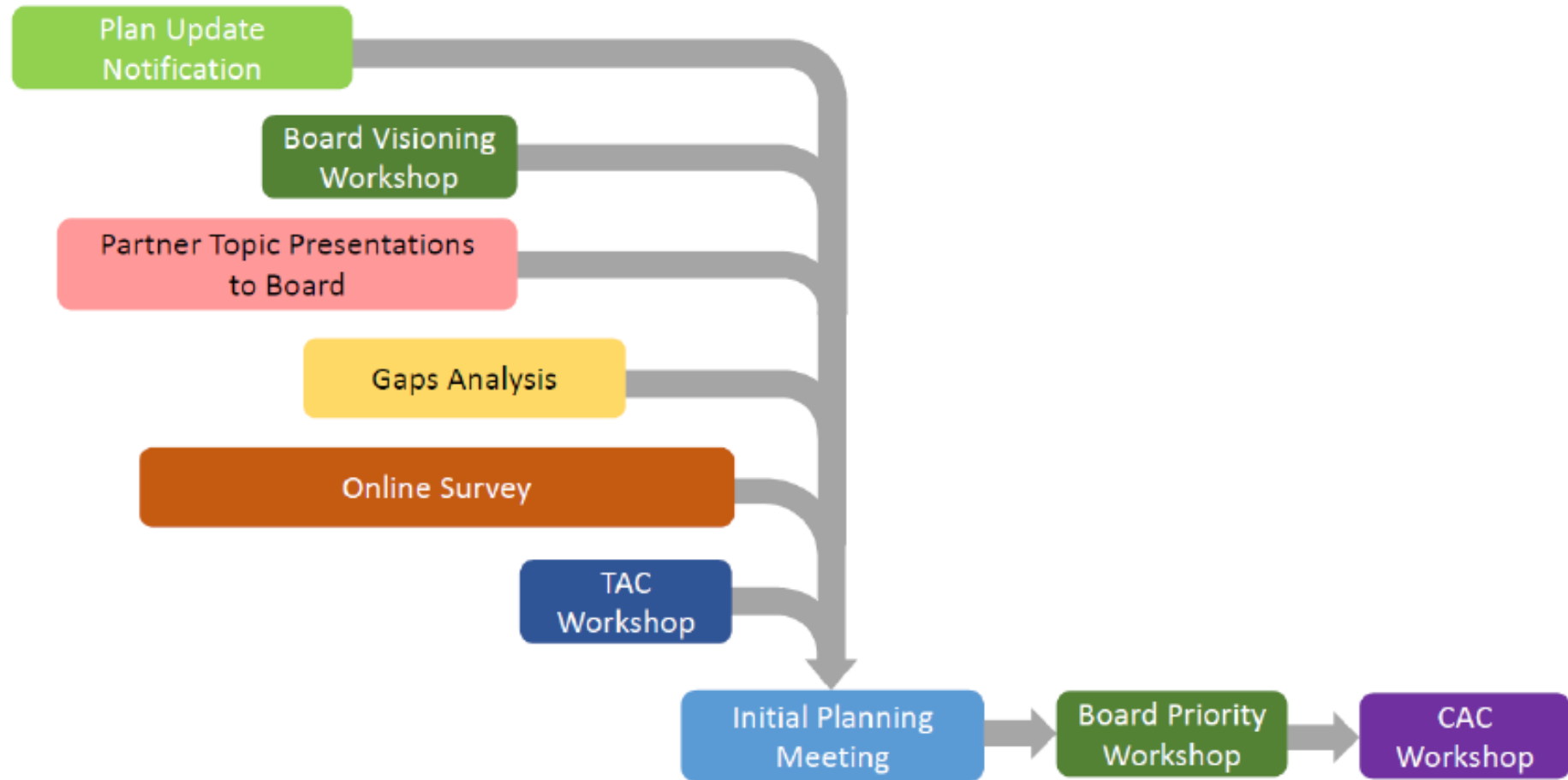


Plan Review Process

Summer 2022 – Fall 2022

Plan Development Process

Stakeholder Engagement



Plan Development Process

Issue Identification and Prioritization

Higher Priority Issues	Lower Priority Issues
<ul style="list-style-type: none">▪ Water quality, including:<ul style="list-style-type: none">○ Stormwater runoff management○ In-lake and in-stream water quality○ Impaired waters (Lake Augusta, Thompson Lake)○ Chloride management○ Mississippi River outfalls and bluff erosion▪ Education and engagement▪ Partner collaboration, including:<ul style="list-style-type: none">○ Grant and cost-share projects○ Regulatory framework	<ul style="list-style-type: none">▪ Flooding and water levels▪ Groundwater management, including:<ul style="list-style-type: none">○ Drinking water quality○ Groundwater conservation▪ Ecological Health, including:<ul style="list-style-type: none">○ Upland area protections○ Invasive species management○ Vegetated buffers

Plan Development Process

Issue Identification and Prioritization

Higher Priority Issues	Lower Priority Issues
<ul style="list-style-type: none">▪ Water quality, including:<ul style="list-style-type: none">○ Stormwater runoff management○ In-lake and in-stream water quality○ Impaired waters (Lake Augusta, Thompson Lake)○ Chloride management○ Mississippi River outfalls and bluff erosion▪ Education and engagement▪ Partner collaboration, including:<ul style="list-style-type: none">○ Grant and cost-share projects○ Regulatory framework	<ul style="list-style-type: none">▪ Flooding and water levels▪ Groundwater management, including:<ul style="list-style-type: none">○ Drinking water quality○ Groundwater conservation▪ Ecological Health, including:<ul style="list-style-type: none">○ Upland area protections○ Invasive species management○ Vegetated buffers

Healthy lakes, streams, and River through partnerships, education, and coordinated action

Plan Development Process

Priority Waterbodies

Priority Level	Description/criteria ¹	LMRWMO Waterbodies ²
Priority 1A	Includes major streams or lakes with public access that meet one or more of the following water quality criteria : <ul style="list-style-type: none"> Waterbody is impaired (excluding mercury impairments) Waterbody is nearly impaired Waterbody is prioritized for protection by the MPCA, or Waterbody exhibits degrading water quality trend in clarity or total phosphorus 	<ul style="list-style-type: none"> Mississippi River Interstate Valley Creek Ivy Falls Creek Kaposia Creek Thompson Lake Rogers Lake Seidls Lake
Priority 1B	Includes lakes meeting priority 1A criteria but lacking public access	<ul style="list-style-type: none"> Hornbeam Lake Lake Augusta Sunfish Lake
Priority 2	Includes waterbodies not identified as priority 1A or priority 1B that meet at least two of the following criteria: <ul style="list-style-type: none"> Waterbody has intercommunity drainage area Waterbody has public access Waterbody has high ecosystem value Waterbody is classified as a deep lake Waterbody is included in the MDNR Fishing in the Neighborhood (FiN) program 	<ul style="list-style-type: none"> Copperfield Pond Lemay Lake Ohmans Lake (Marcott) Pickerel Lake Rosenberger Lake (Marcott) Simley Lake

Plan Development Process

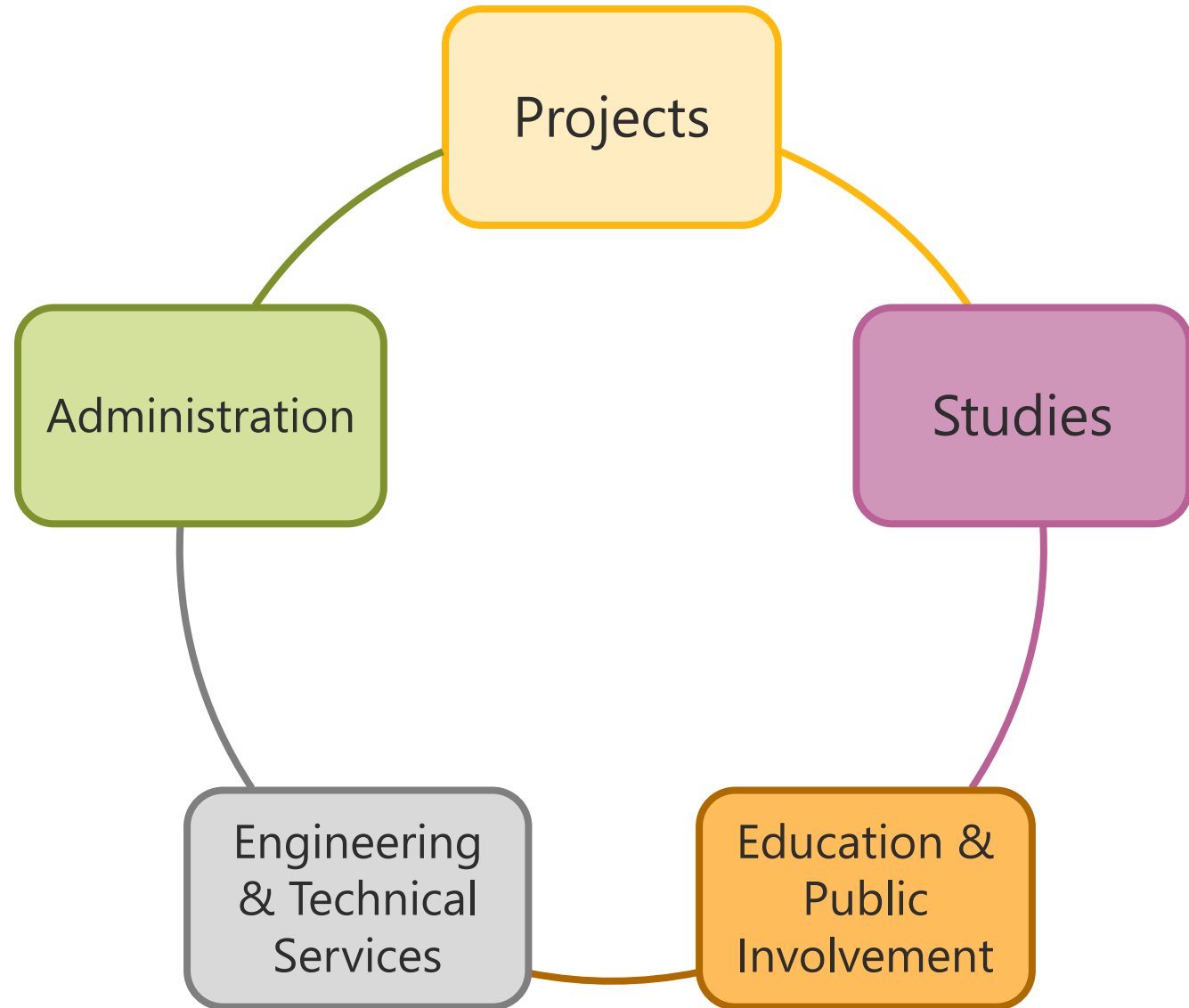
Highlights

- New vision
- “Non-degradation” goals for priority waterbody water quality
- Revised water quality performance standard
- Lower trigger for water quality treatment in “Regulatory Watersheds”
- Increased focus on streams via studies and implementation
- Continue the collaborative relationship between the LMRWMO and Cities/partners

Plan Review Process

- Internal review in Summer 2022
- Formal 60-day review from August 5, 2022 through October 7, 2022
- Response to comments distributed prior to a public hearing on November 9, 2022

Plan Implementation and Next Steps



Plan Implementation and Next Steps

WQ Projects

- Stabilization projects on Ivy Falls Creek/Interstate Valley Creek
- Stormwater management/shoreline projects on Lake Augusta
- Cost-share program to support larger-scale partner projects

Monitoring & Studies

- Mississippi River direct drainage study
- Watershed-wide water quality and hydrologic model
- Continued monitoring of priority waterbodies
- Stream monitoring program and studies
- Rogers Lake subwatershed assessment

Education & Outreach

- Targeted outreach to address chloride loading
- Educational support for City MS4 permit needs
- Coordination with partners for K-12 programs
- Continued workshop and project support for small scale stormwater BMPs

Questions?