

# Seidls Lake

## 2024 Water Monitoring Report

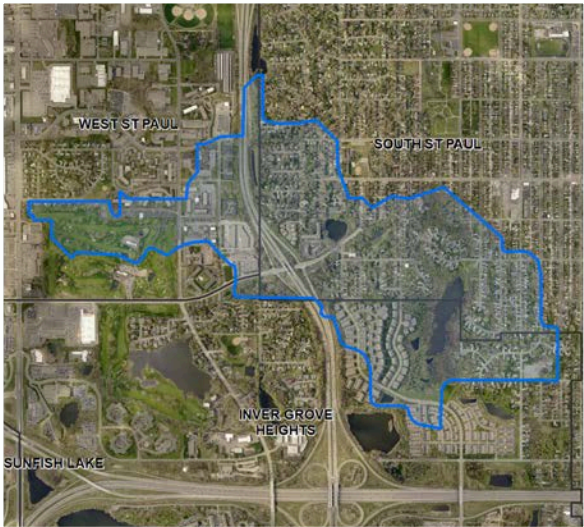


### Watershed

Seidls Lake is located in the Cities of Inver Grove Heights and South Saint Paul, within the Lower Mississippi River Watershed Management Organization (LMRWMO). Land use within the watershed is primarily residential with a portion of the west watershed covered by a golf course and a portion of Highway 52. The lake is currently not listed on Minnesota’s 303(d) List of Impaired Waters.

### Lake Details

- Max Depth: 17 feet
- Watershed Size (shown): 420 acres
- Major Watershed: Mississippi River
- MPCA Lake Classification: Shallow
- Met Council Lake Grade (2024): **D**



### Monitoring

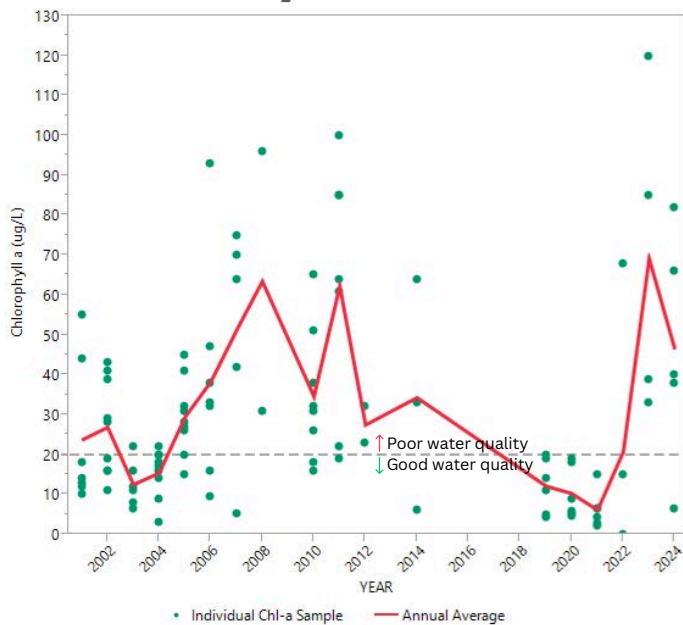
The LMRWMO supports Seidls Lake monitoring through the Metropolitan Council’s Community Assisted Monitoring Program (CAMP) volunteer lake monitoring program. The lake is surrounded by parkland and is as a priority waterbody for the Cities and LMRWMO. Due to the lack of a natural outlet, high lake water levels have been observed in the last 15 years compared to historic levels.

### Water Quality

Water quality in Seidls Lake continues to be lower than desired. Sampling data collected throughout the assessment period provide a more holistic view of water quality conditions than in previous years. All parameters exceed the state standard - both chlorophyll-a and total phosphorus depth results are worse than 2023 whereas secchi average improved from 2023. The below table shows the 2024 data.

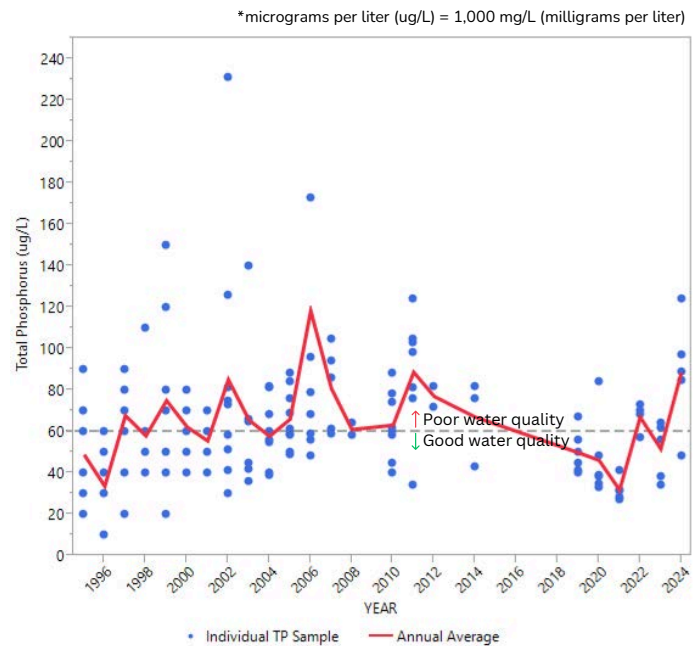
| Water Quality Parameters | MPCA Standard | Minimum | Maximum | Average |
|--------------------------|---------------|---------|---------|---------|
| Chlorophyll-a (ug/L)     | 20            | 6.4     | 82      | 46.48   |
| Total Phosphorus (ug/L)  | 60            | 48      | 124     | 88.6    |
| Secchi Depth (m)         | 1             | 0.5     | 1.8     | 0.92    |

# Water Quality Data 1995 - 2024



## Chlorophyll-a\*

Chlorophyll-a is the pigment that gives plants their green color. High levels indicate excessive algae from high nutrient levels in the lake. Low chlorophyll-a levels indicate good water quality. MPCA standard is 20 ug/L (dashed line).



## Phosphorus\*

Phosphorus is a nutrient required for plant growth. High phosphorus levels can lead to algae blooms, turning water green. Low phosphorus levels indicate good water quality. MPCA standard is 60 ug/L (dashed line).

## Watershed Projects

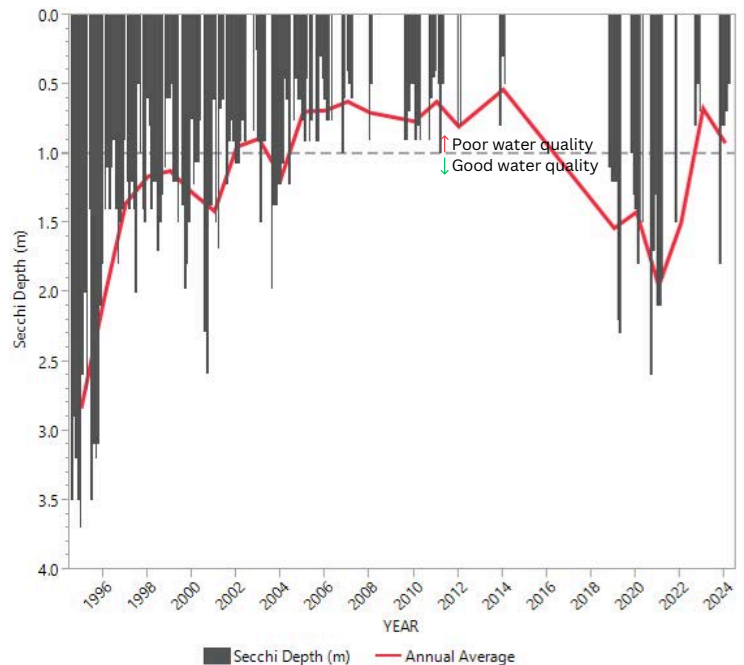
Multiple watershed stormwater management projects have been implemented since 2010 to treat stormwater before entering Seidls Lake.

A lake outlet project to maintain consistent water levels was completed in 2022 and a natural shoreline restoration project was installed in 2024 along with trail improvements.



Native shoreline and trail improvement project

The lake will continue to be monitored to track changes in water quality. Investigation into the impacts of carp populations on poor water quality may be implemented in the future.



## Secchi Depth

A black and white secchi disc is lowered into the water until no longer visible and measures water clarity. High secchi disc depths indicate good water quality. MPCA standard is 1 m (dashed line).

## How can you get involved?

Anyone can help improve water quality! Installing a raingarden increases water infiltration and reduces pollution runoff that can negatively impact local water quality. The LMRWMO offers grants to residents to install raingardens, native gardens, and native shoreline plantings as part of the Dakota County Soil and Water Conservation District's **Landscaping for Clean Water** program.

**Additional Information:** MN Impaired Waters Map: <https://www.pca.state.mn.us/water/impaired-waters-viewer-iwaw>  
DNR Lake Finder: <https://www.dnr.state.mn.us/lakefind/index.html>  
LMRWMO Contact: Joe Barten, Administrator - [joe.barten@co.dakota.mn.us](mailto:joe.barten@co.dakota.mn.us) - 651-480-7784  
LMRWMO Website: [www.LMRWMO.org](http://www.LMRWMO.org)